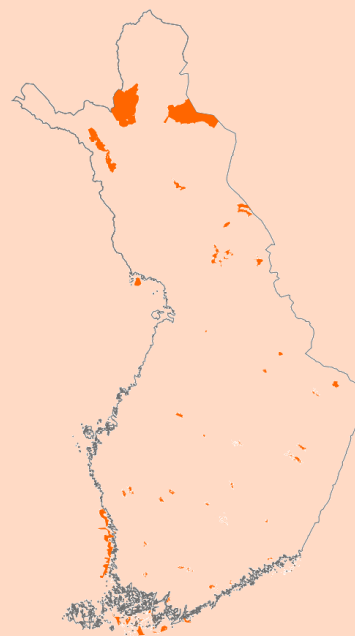


Finland's national parks

Population	5.5 mil.
Land area	338 411 km ²
GDP per capita (in PPP)	34 200 EUR
Share of national parks on total area	2.9 %



40 national parks in the country

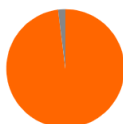


Protected areas were created based on the IUCN criteria



1 centralized nature-protection organization manages land in national parks

Metsähallitus, Parks and Wildlife Finland (Ministry of the Environment and Ministry of Agriculture and Forestry)



Almost 100 % of the area of national parks is publicly owned

Only in 2 national parks there are parts owned by municipality and private company



Wilderness zones take up 7.8 % of the land area

The total area of the wilderness zone differs by each national park.



There are no conflicts of interests with other economic activities



Entrance fees are not charged in Finnish national parks